

This manual describes the steps to update the firmware of the LS3300 AC Power Calibrator (hereafter referred to as the LS3300). When updating, be sure to follow the instructions in this manual.

### Disclaimers

By downloading and installing this software, the customer agrees to all of the following disclaimers.

- Yokogawa bears no liability for any problems occurring as a result of downloading or installing this software.
- Yokogawa bears no responsibility for any damage caused directly or indirectly as a result of using this software.
- This software is provided free of charge, however no unlimited warranty against software defects exists, nor is any claim made that the product is free of all defects whatsoever. Also, Yokogawa is not always able to repair defects ("bugs") in, or respond to questions or inquiries about this software.

### Trademarks

- Microsoft and Windows are registered trademarks or trademarks of Microsoft Corporation in the United States and/or other countries.
- Adobe and Acrobat are either registered trademarks or trademarks of Adobe Systems Incorporated.
- Other company and product names are registered trademarks or trademarks of their respective holders.
- In this manual, the ® and TM symbols do not accompany their respective registered trademark or trademark names.

## Preparations before Updating

### Installing the USB Driver

Connect the LS3300 to a PC with a USB cable, and update the firmware. To communicate via USB interface, YOKOGAWA's USB driver (YKMUSB) needs to be installed in the PC. You can download it from YOKOGAWA website.

<https://tmi.yokogawa.com/library/documents-downloads/software/usb-drivers/>

Required driver: YKMUSB

### Checking the Firmware Update Tool

Unzip the downloaded firmware file, and check that the following files are in the folder.

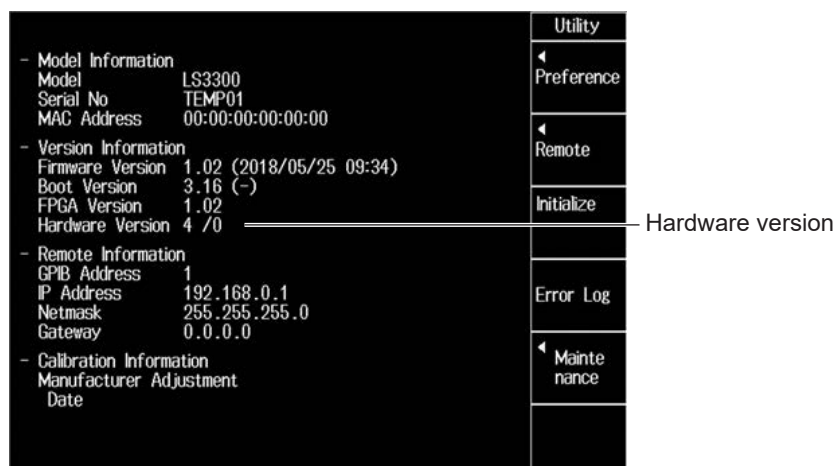
- BootloaderDownloadApp.exe (update program)
- BootloaderDownloadApp.ini (configuration file)
- bootload.dll, tmctl.dll, YKMUSB.dll (DLL files)
- LS3300.firm (the instrument's firmware data file)
- LS3300UpdateIM\_EN.pdf (firmware update manual (this manual))

---

## Checking the LS3300 Hardware Version

1. On the top menu, press the UTILITY soft key or the **UTILITY** key.
2. The following product information screen appears. The firmware can be updated when the hardware version is 4/0.

If the version is 4/1, there is no need to update. Even if you try to update, an error will appear, and you will not be able to update.



### Note

When you update the firmware, the LS3300 setup parameters will be reset to their factory default values. If necessary, back up the setup parameters before updating.

---

## Firmware Update Procedure

### Operating the LS3300

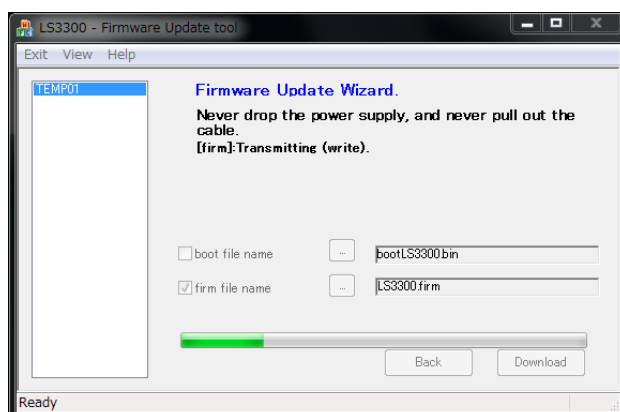
1. Using a USB cable, connect the USB port for PCs on the rear panel to the PC.
2. While holding down the **ESC** key, turn on the power switch.  
Hold down the **ESC** key until all the LEDs on the panel illuminate. The instrument will start in firmware update mode.
3. Check that only a single LS3300 running in firmware update mode is connected to the PC.

### Operating the Firmware Update Tool

4. In the PC Device Manager, check that the PC has detected the LS3300.
5. Run the update program (BootloaderDownloadApp.exe) in the folder.  
The firmware update tool (BootloaderDownloadApp) will start, and firmware updating will begin.

6. A progress bar shows the progress.

Do not remove the USB cable or turn off the LS3300 until updating is finished.



## Updating Completion and LS3300 Restart

7. When updating completes successfully, the update tool closes automatically, and the LS3300 restarts automatically.

It takes about 30 seconds for the instrument to restart after updating. Wait for the display to change from “LS3300” to the top screen. Do not turn off the power while waiting.

## Checking the LS3300 Firmware Version

8. On the top menu, press the UTILITY soft key or the **UTILITY** key.
9. The following product information screen appears. Check that the firmware version has been updated.

The hardware version will remain the same.

